

#4807/4808/4809/4810

# eDIN INSTALLATION REPEATER



## PRODUCT OVERVIEW

DMX opto-splitters in NEMA1 assemblies for permanent installation. Complete with conduit knockouts and terminal strip connections for fast, easy installation.

## FEATURES

- Internally pre-configured and pre-wired, ready for installation
- Four, eight, twelve or sixteen output models
- Up to four inputs, or daisy-chain a single source
- Removable terminal strip connectors
- No fuses- data links self-reset after overcurrent removed
- 120-277V, 50/60Hz power supply
- Power, processor and DMX activity LEDs
- Direct pass-through and DMX line termination switch

## SPECIFICATIONS

- 2500V opto-isolation between input and output ports
- 250V fault protection on input and output ports
- 6W power consumption per installed card
- Operating Conditions: dry, indoor locations; 32°F-118°F (0°C to 48°C); 10-90% relative humidity, non-condensing

## STANDARDS COMPLIANCE

- ANSI E1.11 DMX512-A(2008)/USITT DMX512(1990)
- ETL-Listed

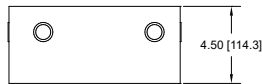
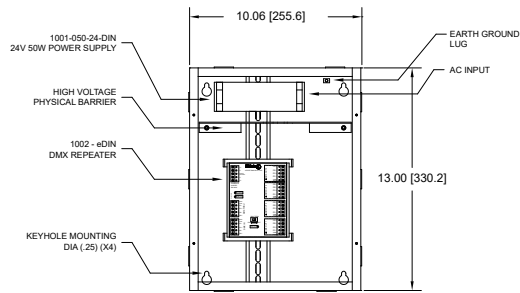
## WEIGHTS AND DIMENSIONS

- 4807: 10"W x 13"H x 4.5"D (255mm x 330mm x 115mm); 9.3 lbs (4.25 kg) shipping weight
- 4808: 10"W x 13"H x 4.5"D (255mm x 330mm x 115mm); 9.8 lbs (4.5 kg) shipping weight
- 4809: 10"W x 23"H x 4.5"D (255mm x 585mm x 115mm); 14.3 lbs (6.5 kg) shipping weight
- 4810: 10"W x 23"H x 4.5"D (255mm x 585mm x 115mm); 14.8 lbs (6.75 kg) shipping weight

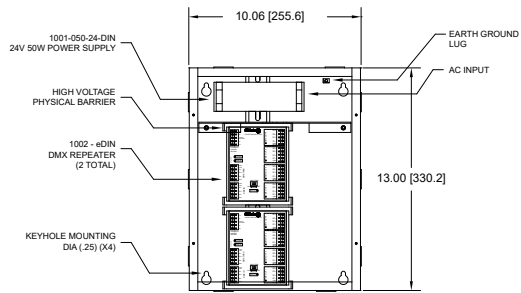
## INCLUDED FURNISHINGS

- Pluggable IDC (Insulation Displacement Contact) connectors
- Installation/Operations manual

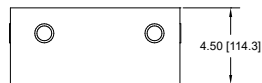
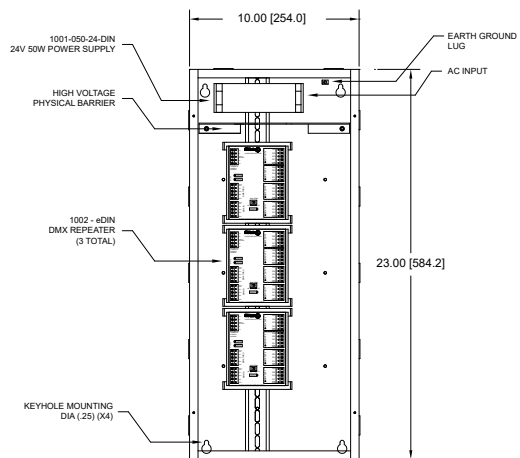
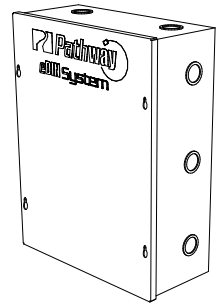
### DIMENSIONS



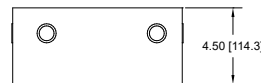
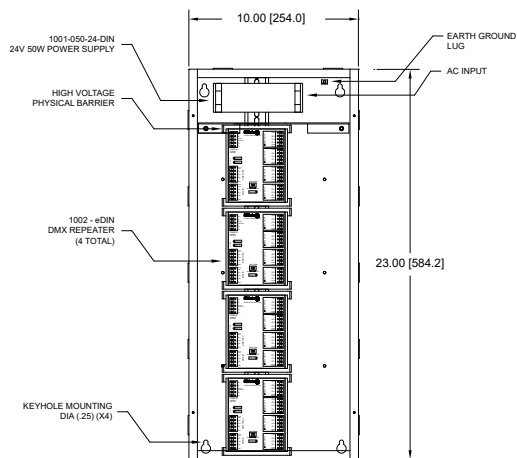
#4807



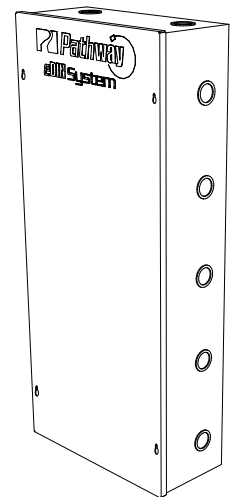
#4808



#4809



#4810

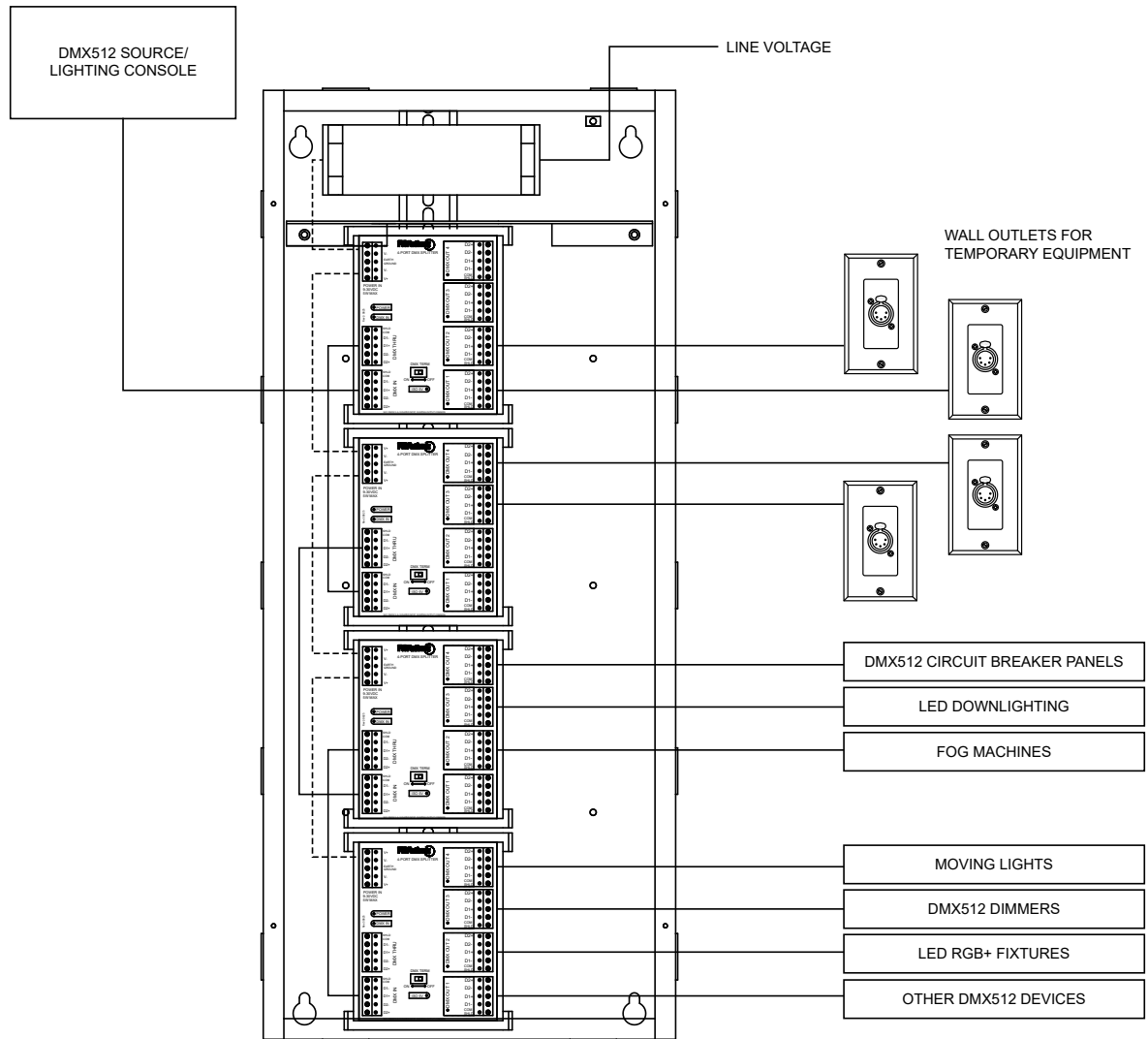


### DMX PIN OUTS

|   | XLR PIN # | PURPOSE             |
|---|-----------|---------------------|
| DMX512/RDM<br>PINOUT:<br>FOR SHIELDED<br>TWISTED PAIR | 1         | Shield              |
|   | 2         | Data - (complement) |
|   | 3         | Data + (true)       |
|   | 4         | Not Used            |
|   | 5         | Not Used            |

|                                      | XLR PIN # | CAT5/6 Pin # and Color | PURPOSE                   |
|--------------------------------------|-----------|------------------------|---------------------------|
| DMX512/RDM<br>PINOUT:<br>FOR CAT 5/6 | 3         | 1 - White/Orange       | Data 1 + (true)           |
|                                      | 2         | 2 - Orange             | Data 1 - (complement)     |
|                                      | 5         | 3 - White/Green        | Not Used                  |
|                                      | 4         | 6 - Green              | Not Used                  |
|                                      | -         | 4 - Blue               | Not Used - do not connect |
|                                      | -         | 5 - White/Blue         | Not Used - do not connect |
|                                      | 1         | 7 - White/Brown        | Shield/COM                |
|                                      | 1         | 8 - Brown              | Shield/COM                |

**APPLICATION RISER**



MODEL 4810 SHOWN

**ORDERING INFORMATION**

| PART # | DESCRIPTION                            |
|--------|--|
| 4807   | DMX Installation Repeater 4-way, eDIN  |
| 4808   | DMX Installation Repeater 8-way, eDIN  |
| 4809   | DMX Installation Repeater 12-way, eDIN |
| 4810   | DMX Installation Repeater 16-way, eDIN |