

Job Name:	Catalog #:
Date:	Notes:

**eDIN SYSTEM ENCLOSURE WITH HORIZONTAL DIN RAIL, LARGE**

# #1107



## PRODUCT OVERVIEW

The Pathway 1107 eDIN Enclosure is an ETL-Listed NEMA1 Enclosure for eDIN modules with a power supply.

## FEATURES

- Contractor friendly, sturdy steel construction
- Conduit knockouts provided on all sides
- Logical arrangement makes wiring neat and easy
- Barriered high-voltage section for power supplies (power supply not included)
- Internal DIN rail can be used to mount eDIN and other standard DIN-rail modules
- Pre-installation service of eDIN modules and power supply available; local contractor only lands main power and data lines
- When eDIN modules are factory-installed in a Pathway enclosure, assembly is ETL listed

## SPECIFICATIONS

STANDARDS COMPLIANCE
<ul style="list-style-type: none"> <li>• ETL-Listed (When eDIN Modules factory-installed)</li> </ul>
WEIGHTS AND DIMENSIONS
<ul style="list-style-type: none"> <li>• 13.5 lbs (6.1 kg)</li> <li>• 10.2"W x 23.2"H x 4.5"D (260mm x 590mm x 120mm)</li> </ul>
RAIL SPACE
<ul style="list-style-type: none"> <li>• 3 x 9.5" (240mm) Horizontal</li> </ul>



## CREATING THE CONFIGURABLE PART NUMBER

Choose the required eDIN System Enclosure. Begin the part number with 49XX where XX is the last two digits of the eDIN System Enclosure part number. Follow this with the list of modules to be included in the enclosure. The first module will be designated with "M". Then add the power supply. VIA Switches must be in a superior position. See chart below.

The logic of the construction results in part numbers such as: **49XX-MXX-XX-XX-PXX** or **49XX-670X-MXX-PXX**.

The 1107 Large Enclosure has three 9.5" (240mm) horizontal DIN rail sections. **Choose one A-type or only one of either the B-type or C-type modules per section of DIN rail.**

**A-Type Modules (4.5"/114mm wide):**

- 1002 DMX Repeater, 4-way
- 6821 Pathport 1-Port Gateway
- 6822 Pathport 2-Port Gateway
- 6829 Network Fade Processor
- 1017 DMX/RDM Merger, 3 ports

**B-Type Modules (6.25"/159mm wide):**

- 1004 Demultiplexer, 16 Channels
- 1006 Analog-to-DMX, 24 Inputs
- 1009 DMX/RDM Repeater, 4 way

**C-Type Modules (8"/203mm wide):**

- 1003 Contact Closure, 12 Relays
- 1008 LED Dimmer/DC Driver, 6 Channel
- 6824 Pathport 4-port Gateway
- 1016 DMX/RDM Hub, 8 ports
- 6705/6706 VIA5 Gigabit Ethernet Switch

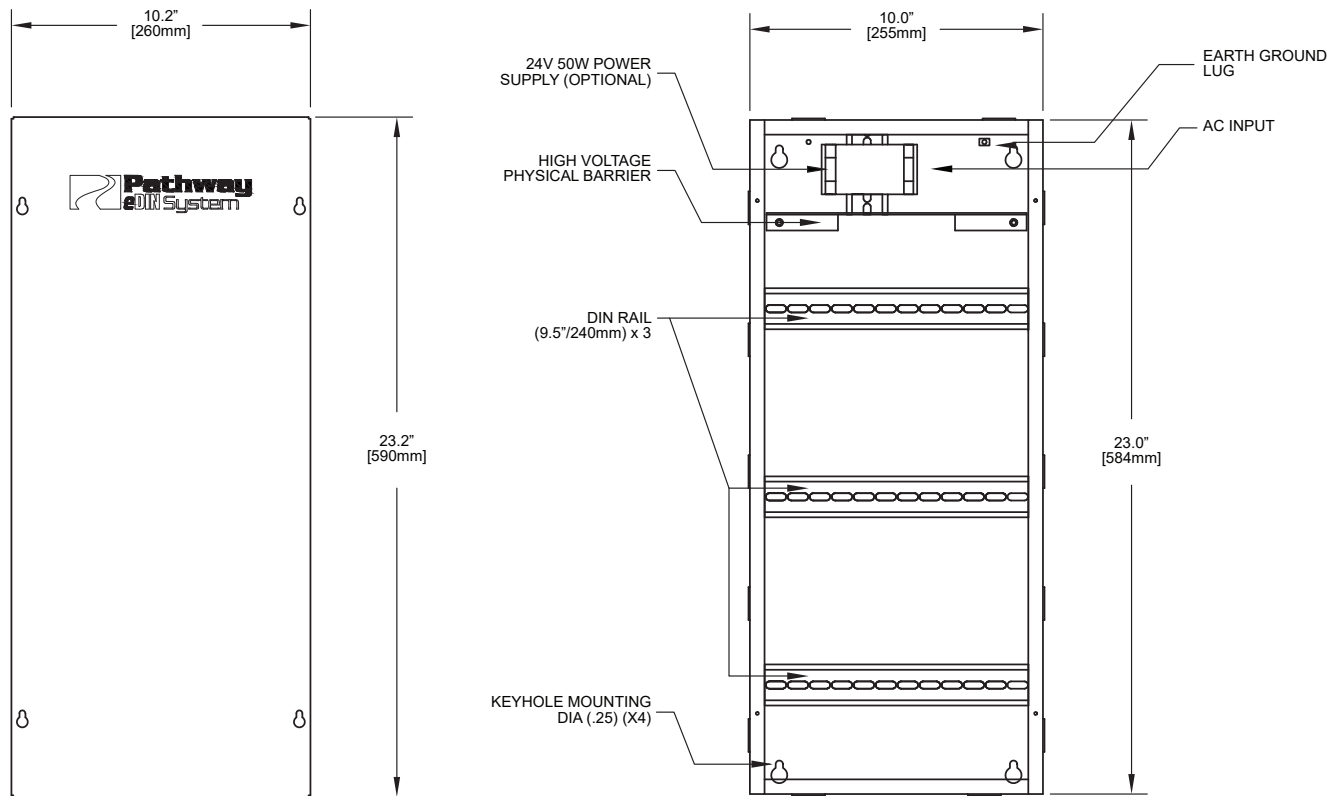
**Power Supplies:**

1001-050-24-DIN 50 Watt, 24VDC Power Supply  
 1001-100-48-DIN 100 Watt, 48VDC Power Supply  
 1001-DC-10 48VDC to 24VDC Converter, 10 Watts  
 1001-DC-20 48VDC to 24VDC Converter, 20 Watts

Part Number	Configurable Code	Size Code
1105	4905	
1106	4906	
1107	4907	
1108	4908	
1109	4909	
1002	M02	A
1003	M03	C
1004	M04	B
1006	M06	B
1008	M08	C
1008-6A	M08.6	C
1009	M09	B

Part Number	Configurable Code	Size Code
6821	M21	A
6822	M22	A
6824	M24	C
1016	M16	C
1017	M17	A
6829	M29	A
6705	6705	C
6706	6706	C
6716	6716	C
1001-050-24-DIN	P52	
1001-100-48-DIN	P09	
1001-DC-10	P11	
1001-DC-20	P12	

## DIMENSIONS



## ORDERING INFORMATION

PART #	DESCRIPTION
1107	eDIN System Enclosure 10" x 23" x 4.5" c/w Three 9" Horizontal DIN Rail