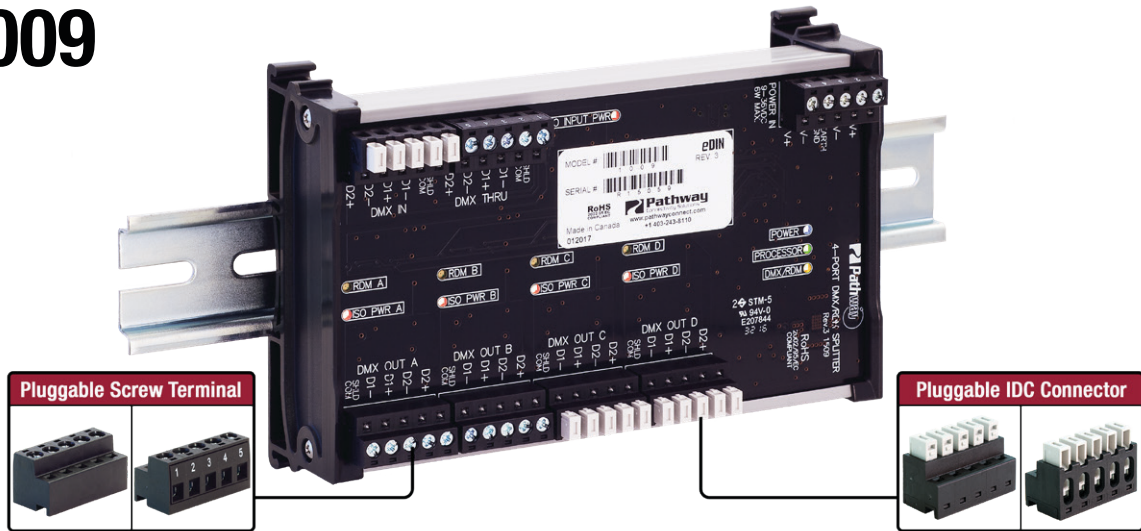


Job Name:		Catalog #:	
Date:		Notes:	

## DMX/RDM REPEATER, 4-WAY, eDIN

# #1009



## PRODUCT OVERVIEW

The eDIN #1009 is a DIN-rail mountable four-way repeater that supports the bi-directional communication standard E1.20 Remote Device Management (RDM), as well as DMX512.

Used in installations that require “star” wiring configurations, all output ports are separate electrical entities, fully opto-isolated and independently protected against fault voltages.

## FEATURES

- One DMX512 input
- Four fully-isolated DMX512/RDM bi-directional output ports
- One active DMX512/RDM bi-directional thru port
- Pluggable screw terminal connector block for power IN and OUT
- Two sets of pluggable terminal blocks for all DMX512/RDM connections to support both shielded twisted pair and CAT5/6
- Power and data easily daisy-chained between modules
- DMX IN indicator
- DC power input indicator
- ISO 5V indicator
- Auto-termination of DMX THRU
- No fuses - self-resetting port protection recovers from voltage faults

## SPECIFICATIONS

- 1000V opto-isolation between DMX ports
- 250V fault protection on DMX ports
- Input operating voltage: 9-30 VDC
- 6W power consumption
- Operating Conditions: 14°F-118°F (-10°C to 48°C); 10-90% relative humidity, non-condensing

### STANDARDS COMPLIANCE

- ANSI E1.11 DMX512-A(2008)/USITT DMX512(1990)
- ANSI E1.20 RDM(2010) - Remote Device Management
- ANSI E1.3 0-10V Analog Control
- RoHS 2011/65/EU
- CE
- Class 2 Low Voltage

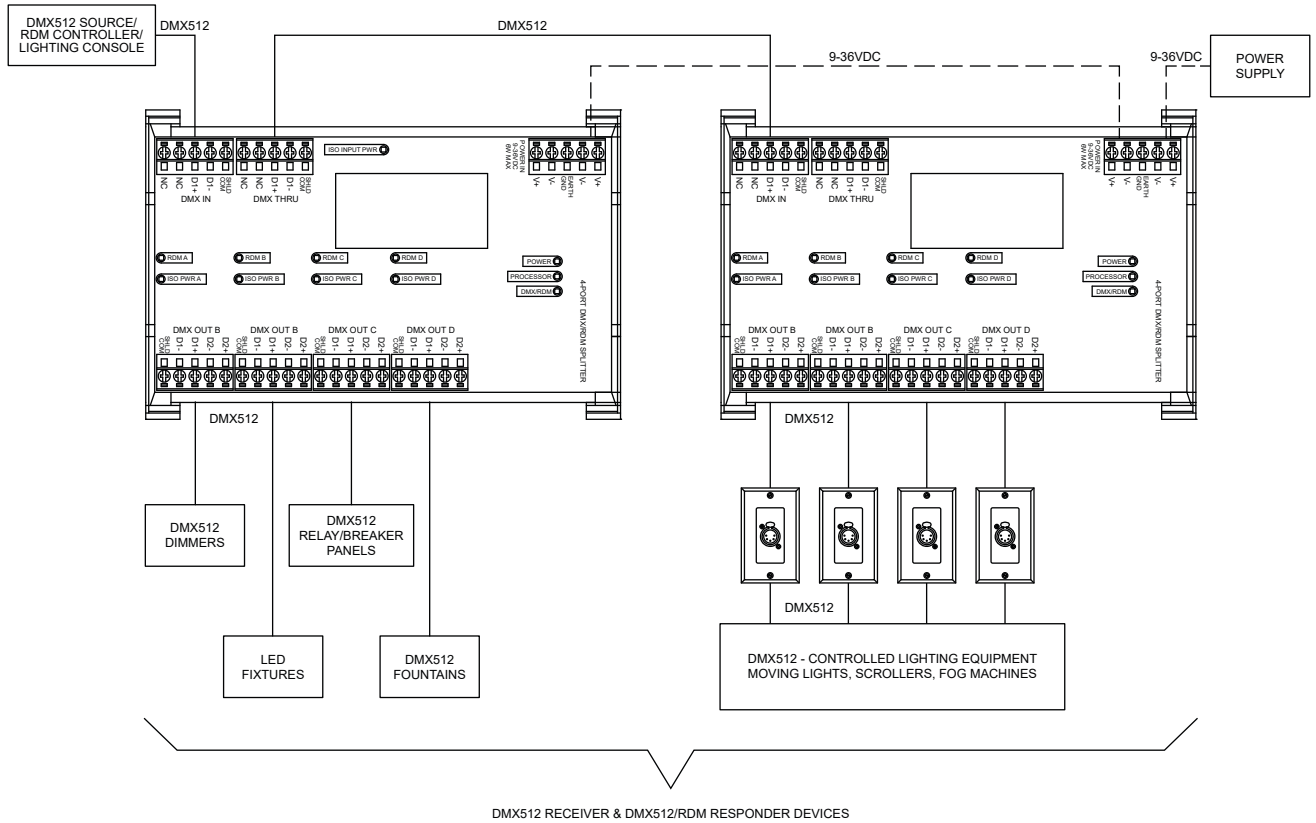
### WEIGHTS AND DIMENSIONS

- 0.7 lbs (0.316 kg)
- 6.25”W x 4”H x 1.55”D (159mm x 103mm x 40mm)

### INCLUDED FURNISHINGS

- DIN tray (housing) with end caps
- 11” (280mm) x 35mm DIN rail
- Installation/Operations manual

## APPLICATION EXAMPLE



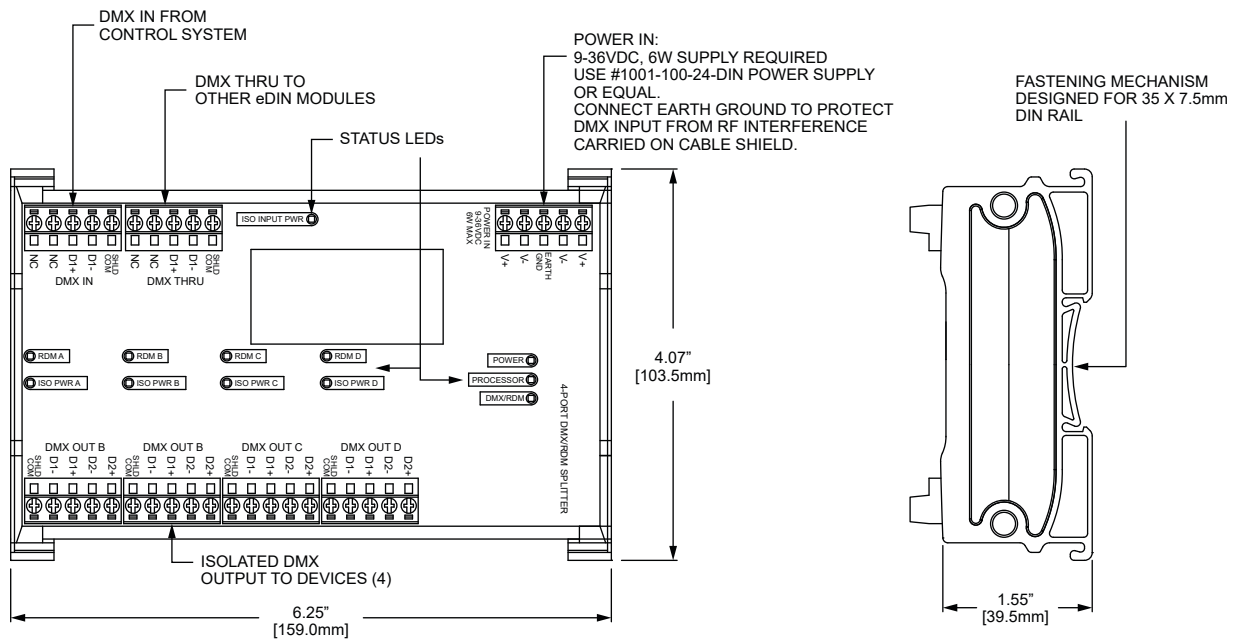
## DMX PIN OUTS

	XLR PIN #	PURPOSE
DMX512/RDM PINOUT: FOR SHIELDED TWISTED PAIR	1	Shield
	2	Data - (complement)
	3	Data + (true)
	4	N/C - No Connection
	5	N/C - No Connection

	XLR PIN #	CAT5/6 Pin # and Color	PURPOSE
DMX512/RDM PINOUT: FOR CAT 5/6	3	1 - White/Orange	Data 1 + (true)
	2	2 - Orange	Data 1 - (complement)
	5	3 - White/Green	N/C - No Connection
	4	6 - Green	N/C - No Connection
	-	4 - Blue	N/C - No Connection
	-	5 - White/Blue	N/C - No Connection
	1	7 - White/Brown	Shield/COM
	1	8 - Brown	Shield/COM

Note: The product silkscreen may show D2+ and D2- on DMX Ports (pins 4 and 5). These pins are included as a convenience for landing multi-conductor cable but are not electrically connected and serve no purpose beyond safe termination of wiring. Pins 4 and 5 are **not an additional DMX port**. Newer products have changed this marking to "NC" for No Connection.

## DIMENSIONS AND CONNECTIONS



## ORDERING INFORMATION

PART #	DESCRIPTION
1009	DMX/RDM Repeater, 4-Way, eDIN, Fully Isolated (6.25")
<b>ACCESSORIES</b>	
1001-050-24-DIN	50 Watt, 24VDC Power Supply, DIN-Mountable
1001-100-24-DIN	100 Watt, 24VDC Power Supply, DIN-Mountable
1103	eDIN Rack Mount Panel, 2RU high, two 16.5" DIN Rail
1105	eDIN System Enclosure 10" x 13" x 4.5" c/w One 9" Vertical DIN Rail
1106	eDIN System Enclosure 10" x 23" x 4.5" c/w One 19" Vertical DIN Rail
1107	eDIN System Enclosure 10" x 23" x 4.5" c/w Three 9" Horizontal DIN Rail
1108	eDIN System Enclosure 10" x 13" x 4.5" c/w Two 9" Horizontal DIN Rail
1109	Expanded eDIN System Enclosure 18.5" x 31.5" x 6.5" c/w Three 24" Vertical DIN Rail, One 18" DIN Rail in Class 1 section, two 3-gang knockouts in removable door